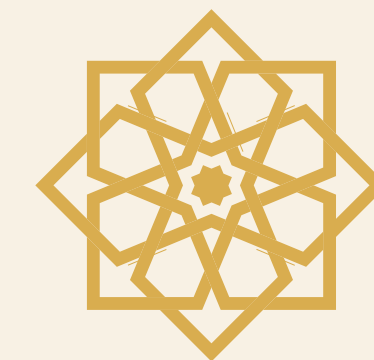




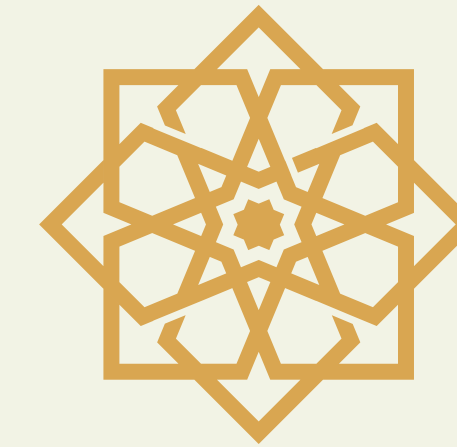
| CENTRAL
BOULEVARD



MOST UNIQUE UPCOMING BUSINESS DISTRICT



CENTRAL
BOULEVARD



BESTECH
GRAND
CENTRAL

THE HUB OF ALL THINGS GREAT IN THE FUTURE STARTS HERE

The fastest growing destination in New Gurugram, Sector 88
is swiftly becoming the hub of modern work-life spaces. Here is
where Bestech Group sees a future of opportunities owning
more than 60 acres of land.

World renowned **Chapman Taylor** has envisioned the marvelous
design of Bestech Grand Central. This area is seamlessly
connected to all necessary livelihood amenities and experiences.

5 STAR HOTEL | BUDGET HOTELS | BIGGEST RETAIL HUB
LARGEST GAMING ZONE | OFFICE COMPLEXES | SHOPPING CENTRES

GREATEST INVESTMENT IN TOWN

SPREAD OVER **4.6 ACRES** WITH **50** PREMIUM PLOTS

FEATURES

LAND
OWNERSHIP

TERRACE
RIGHTS

LOW IN
MAINTENANCE

AMPLE CAR
PARKING

EFFICIENT
PEDESTRIAN PATH

EXCEPTIONAL
FLOOR HEIGHTS



NEW NORMAL OF SUCCESS





2 MINUTES walk from
PROPOSED METRO STATION

5 MINUTES drive from
NATIONAL HIGHWAY 8

15 MINUTES drive from
RAJIV CHOWK

20 MINUTES drive from
DWARKA

35 MINUTES drive from
IGI AIRPORT

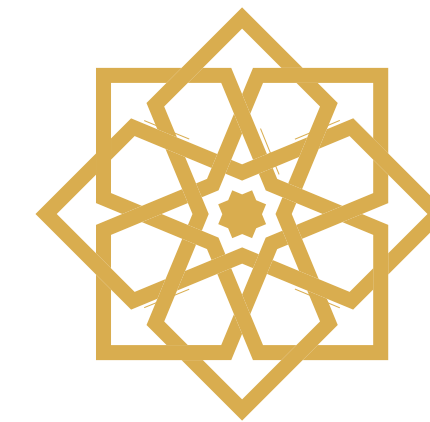
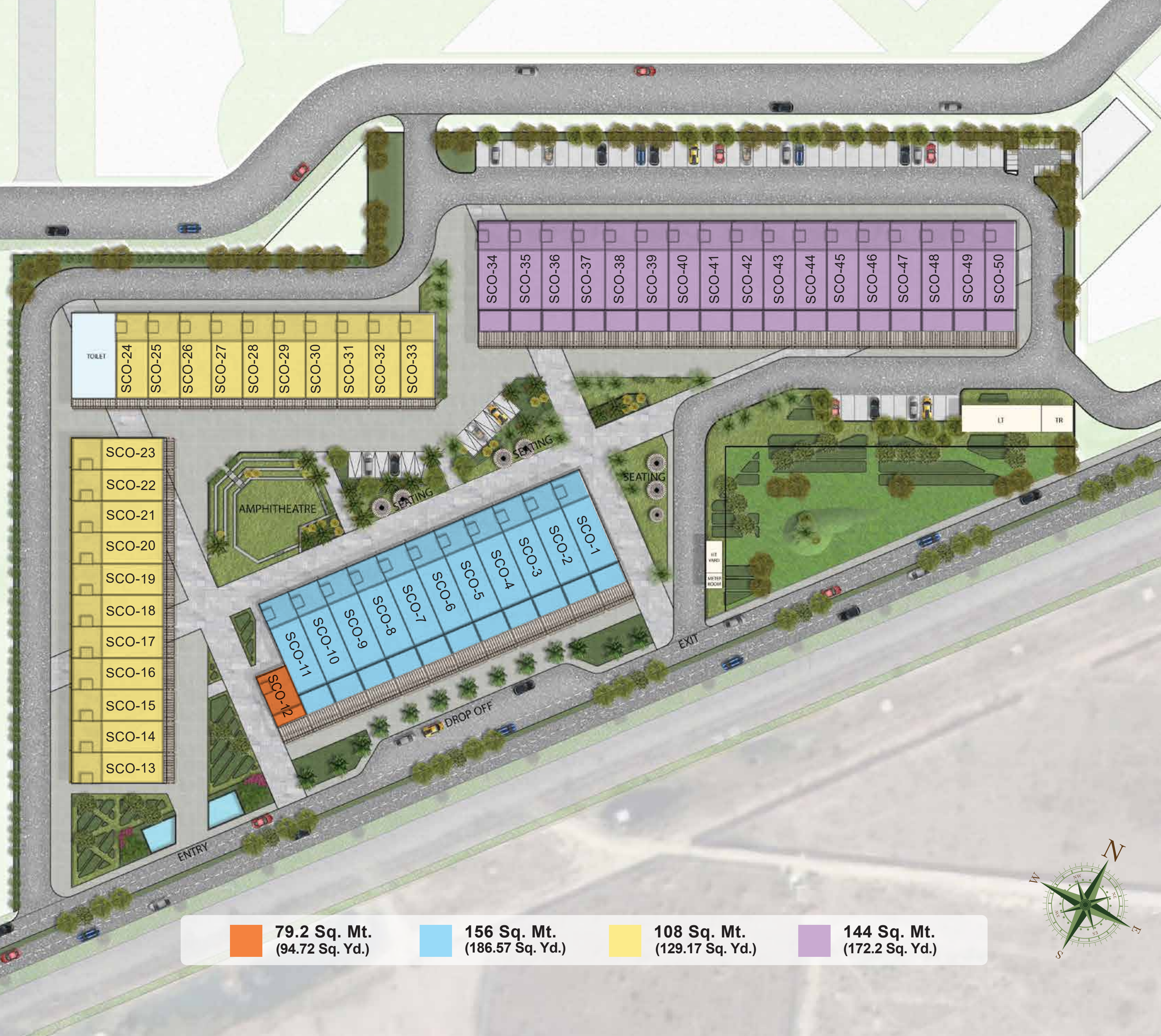


AVAILABLE PLOT SIZES

6 MTRS. X 18 MTRS. = 108 SQ. MTRS. (129.17 SQ. YDS.)

6 MTRS. X 24 MTRS. = 144 SQ. MTRS. (172.22 SQ. YDS.)

6 MTRS. X 26 MTRS. = 156 SQ. MTRS. (186.57 SQ. YDS.)



CENTRAL
BOULEVARD

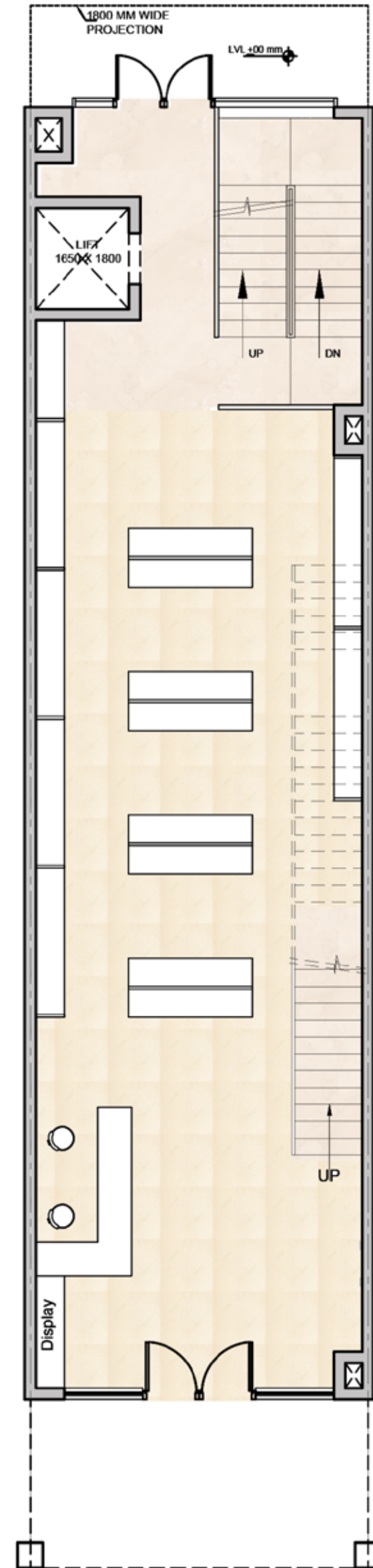


INDICATIVE FLOOR PLAN

6 MTRS. X 18 MTRS.
RETAIL + OFFICE
(Applicable to all sizes)



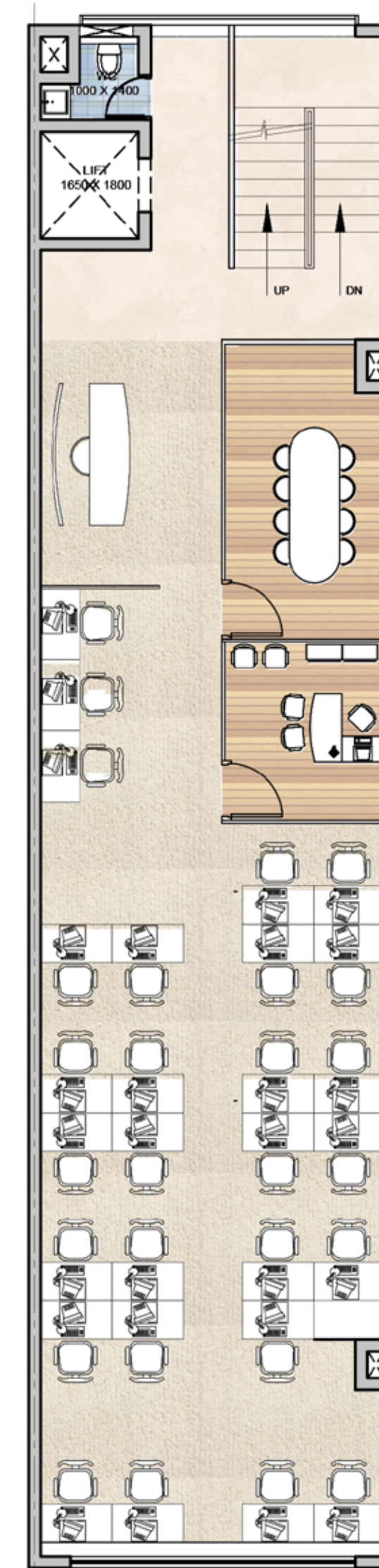
BASEMENT



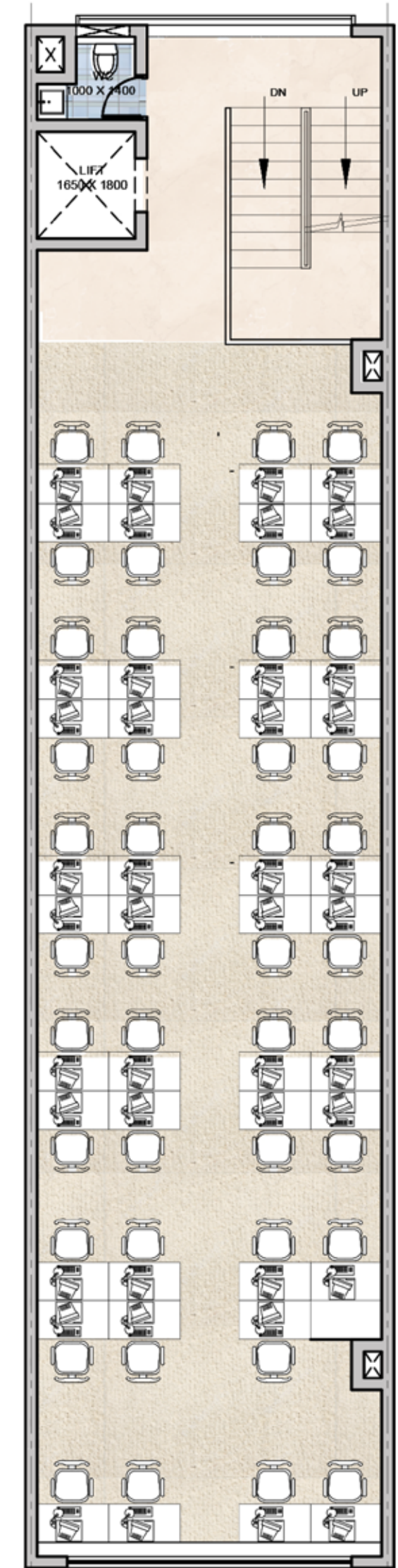
GROUND FLOOR PLAN



FIRST FLOOR PLAN



SECOND FLOOR PLAN

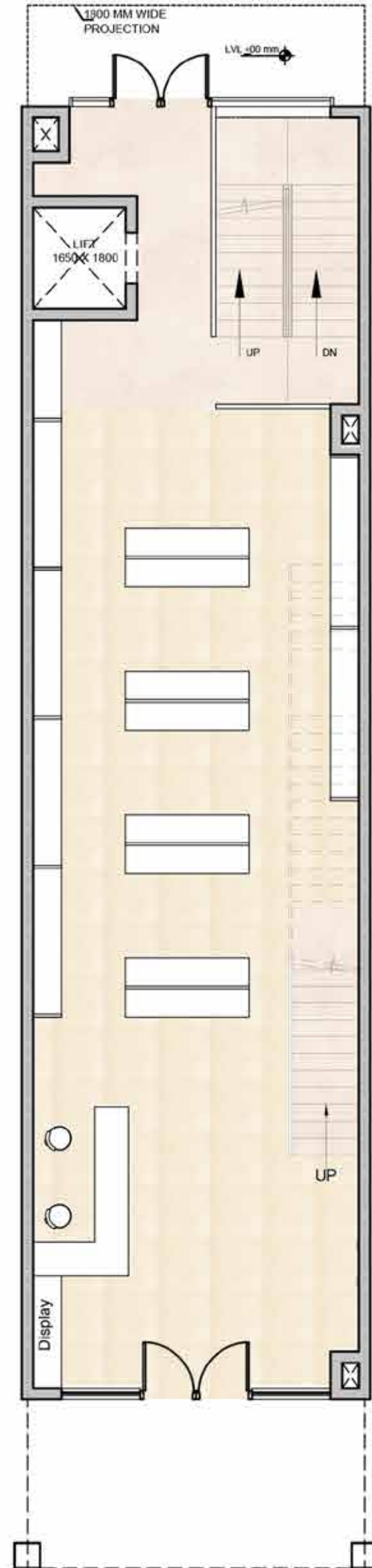


THIRD FLOOR PLAN

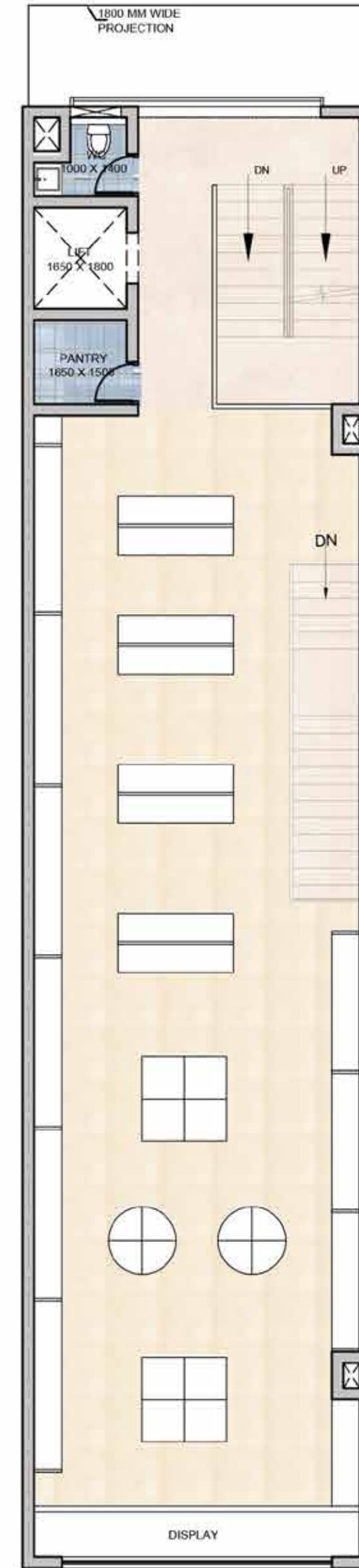
INDICATIVE
FLOOR PLAN
6 MTRS. X 18 MTRS.
RETAIL + RESTAURANT
(Applicable to all sizes)



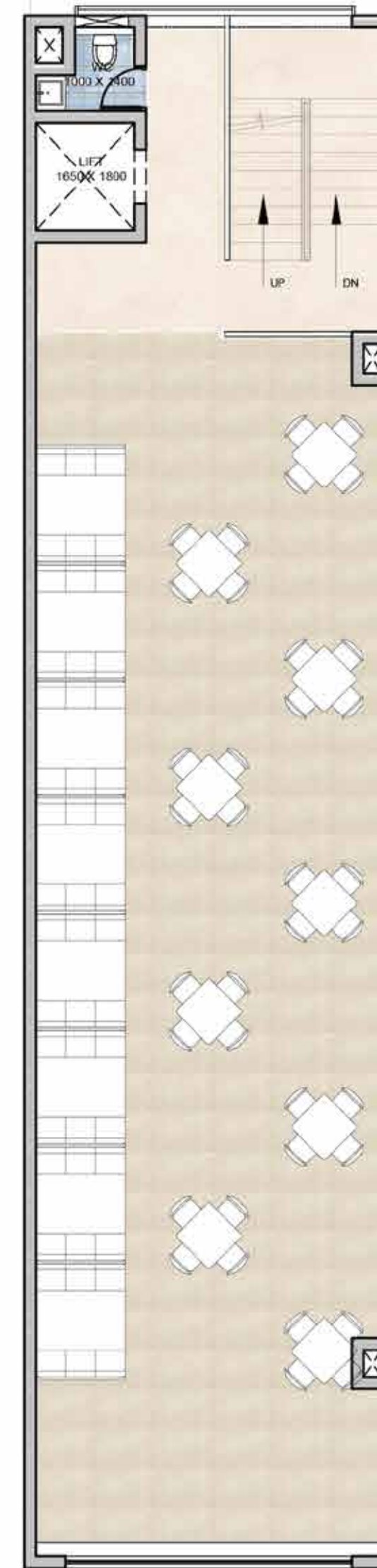
BASEMENT



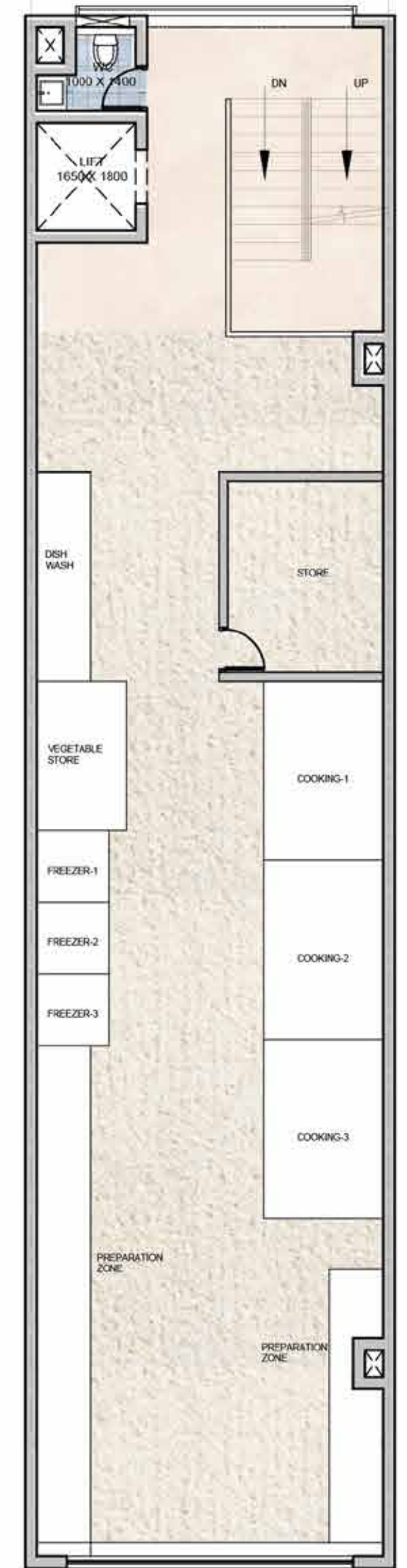
GROUND FLOOR PLAN



FIRST FLOOR PLAN



SECOND FLOOR PLAN



THIRD FLOOR PLAN



CENTRAL BOULEVARD

This project is constructed on a parcel of land admeasuring 4.60 acres approved for development and construction of a Commercial Plotted Shopping cum Office Colony vide License No. 18 of 2020 dated 28.07.2020 granted by Town and Country Planning Department, Haryana (DTCP). Site plan for the Commercial Plotted Shopping cum Office Colony has been approved by DTCP vide DRG No. DTCP 7447 dated 26.06.2020. Name of development, "Central Boulevard", being developed by Bestech India Private Limited (in collaboration with the Land Owners,) in revenue estate of Hayatpur, Sector-88, Tehsil Harsaru District Gurgaon, Haryana (1 Sq. Mtr. = 10.764 Sq. Ft.) HARERA Registration No. 46 of 2020 (Gurugram)